

495	494	493
588	587	586
689	688	687

- Sewer Main**

  - Sewer : Other
  - Combined: Existing
  - Combined: Proposed
  - Combined: Abandoned
  - Sanitary: Existing
  - Sanitary: Proposed
  - Sanitary: Abandoned
  - Storm: Existing
  - Storm: Proposed
  - Storm: Abandoned

**Sewer Manhole**

  - Combined
  - Sanitary
  - Storm
  - Storm Inlet
  - Flow Monitor

**Sewer Blind Connect**

  - Combined
  - Sanitary
  - Storm

**Sewer Main Change**

  - Combined
  - Sanitary
  - Storm

**Sewer Pipe End**

  - Headwall
  - Not Delivered
  - Plain
  - Unknown
- Sewer Clean Out**

  - Combined
  - Sanitary
  - Storm

**Sewer Flow Regulator**

  - Combined
  - Sanitary
  - Storm

**Sewer Pump Station**

  - Sanitary
  - Storm

**DOSD BMP Locations**

  - DOSD BMP Locations

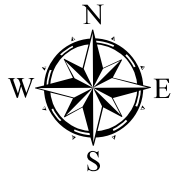
**Sewer Structure**

  - Sewer Structure
  - Sewer Sluice Gate
  - Sewer Flap Gate
  - Sewer Outfall
  - Sewer Bulkhead
  - Sewer Treatment Plant
  - WCLPP Line Of Protection

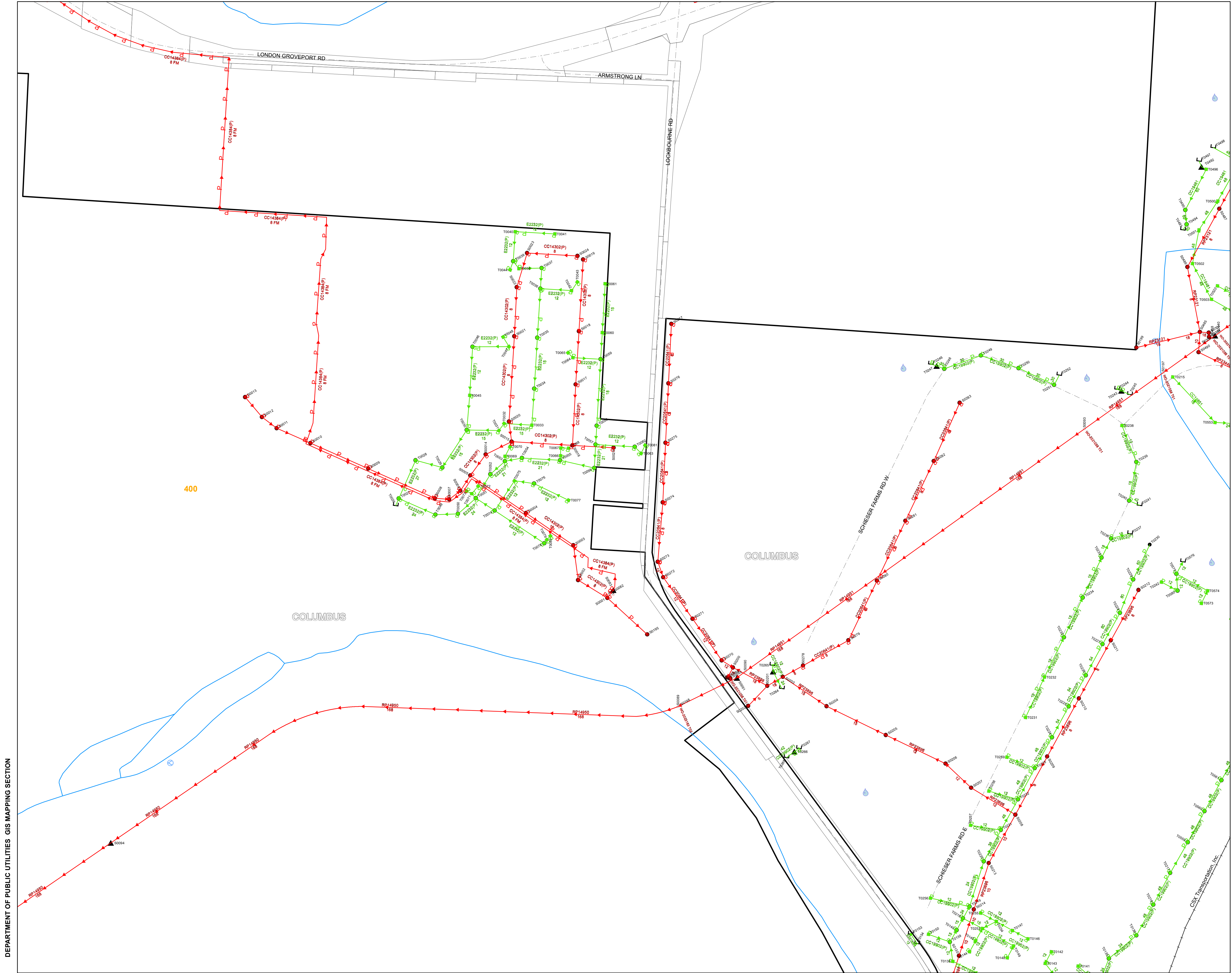
**Open Channel**

  - NOT City of Columbus
  - County Boundaries

Scale  
0 100 200  
Feet



While every reasonable effort has been made to ensure the accuracy of this information, it is provided without warranty of any kind, whether expressed or implied. The City of Columbus assumes no liability arising from any use of this information and is not responsible for its accuracy or completeness. Those using this information for any reason are solely responsible for its use and do so at their own risk.



CREATED: 6/10/2025

# Sewer Atlas 587